

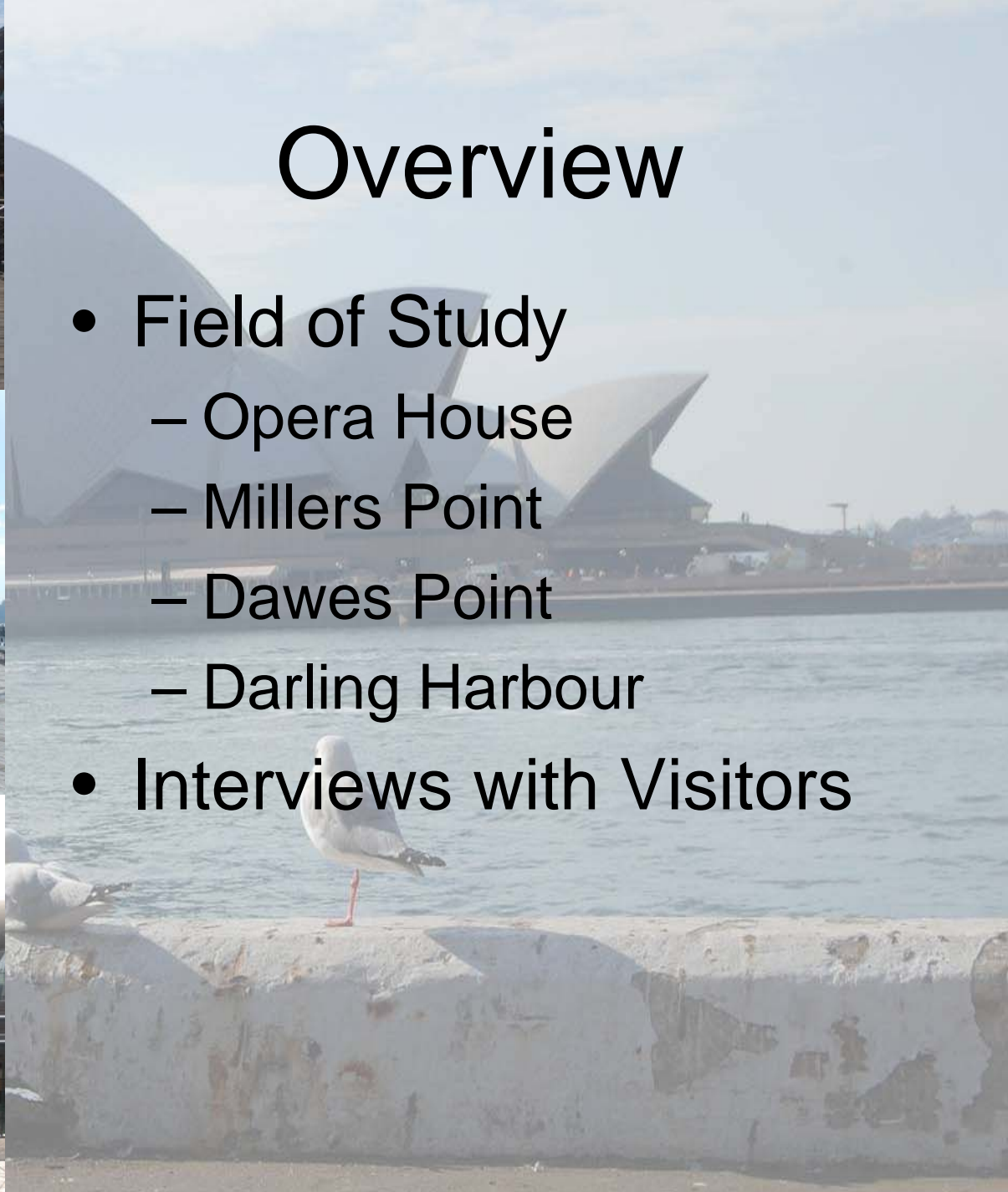
Waterfront

Group D for Detergent !!!!!!!!!!!!!

◀ We clean u ALL.

Overview

- Field of Study
 - Opera House
 - Millers Point
 - Dawes Point
 - Darling Harbour
- Interviews with Visitors



Interviews with Visitors

- Interviews with both local and foreign visitors
 - Origins
 - Purpose of visit
 - Activities
 - Perceptions towards the Harbour Front



Approach of Investigation

- Two levels of investigation
 - Macro level
 - Overall Design
 - Landuse changes
 - Accessibility
 - Connectivity
 - Micro level
 - Facilities
 - Water-based activities



Macro Scale

- Overall Design
 - Encourage people to interact with nature
 - No barrier
 - Wooden floor
 - Vibrancy + Creativity = Livable → Sustainable
 - Greenery



Mac

- Landuse change

- Commercial
- Institutional & Recreational
- Residential
- Transportation
- Mixed



Macro Scale



- Accessibility
 - Numerous modes of transportation
- Connectivity
 - Continuous
 - Linking up all the major tourism attractions
 - E.g. Opera House, The Rocks, Darling Harbour

Micro Scale

- Facilities
 - Seats and benches
 - Toilet
 - Drinking machine
 - Life saving facilities
 - Sightseeing carts
- Water-based activities
 - Jet Boating
 - Cruising



Conclusion

- User-friendliness
- Vibrant and livable designs
- High cultural value
- Improvement
 - Plant more trees
 - More toilets
 - More frequent cleaning



Lessons for HK

- Encourage more contact with the coast
- More continuous path to increase connectivity
- Introduction of natural materials instead of concrete
- Enrich the cultural values of HK
- More seats and benches
- Introduction of interactive facilities
- Expand greenery area



cu ar !